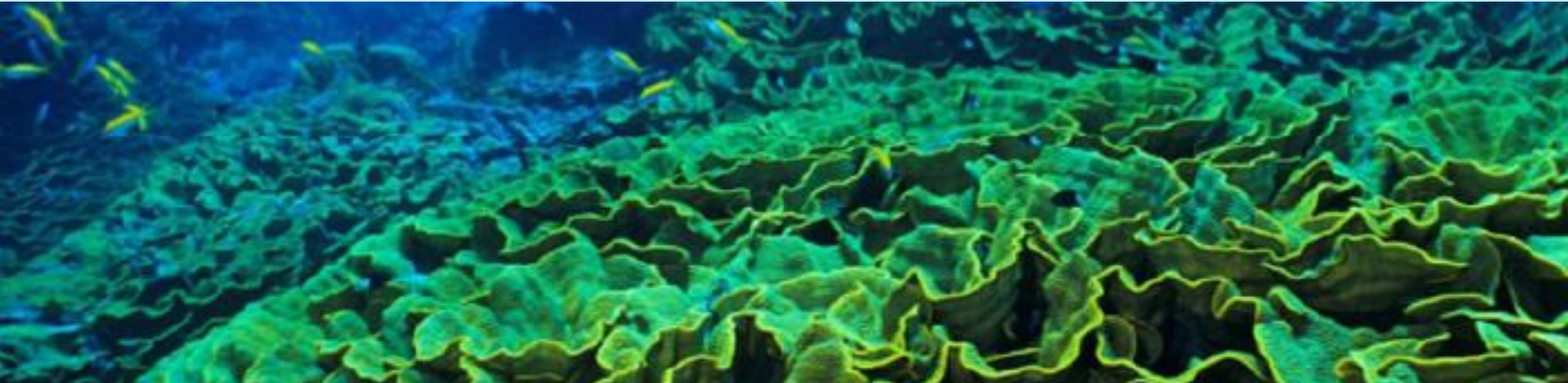


EARTHCHECK MEMBER ACHIEVEMENTS



EARTHCHECK



JANUARY 2011

The planet deserves more than half measures

EarthCheck Pty Ltd
PO Box 12149
George Street
Queensland 4003
Australia

P +61 7 3238 1900
E info@earthcheck.org
W www.earthcheck.org

WHY EARTHCHECK?



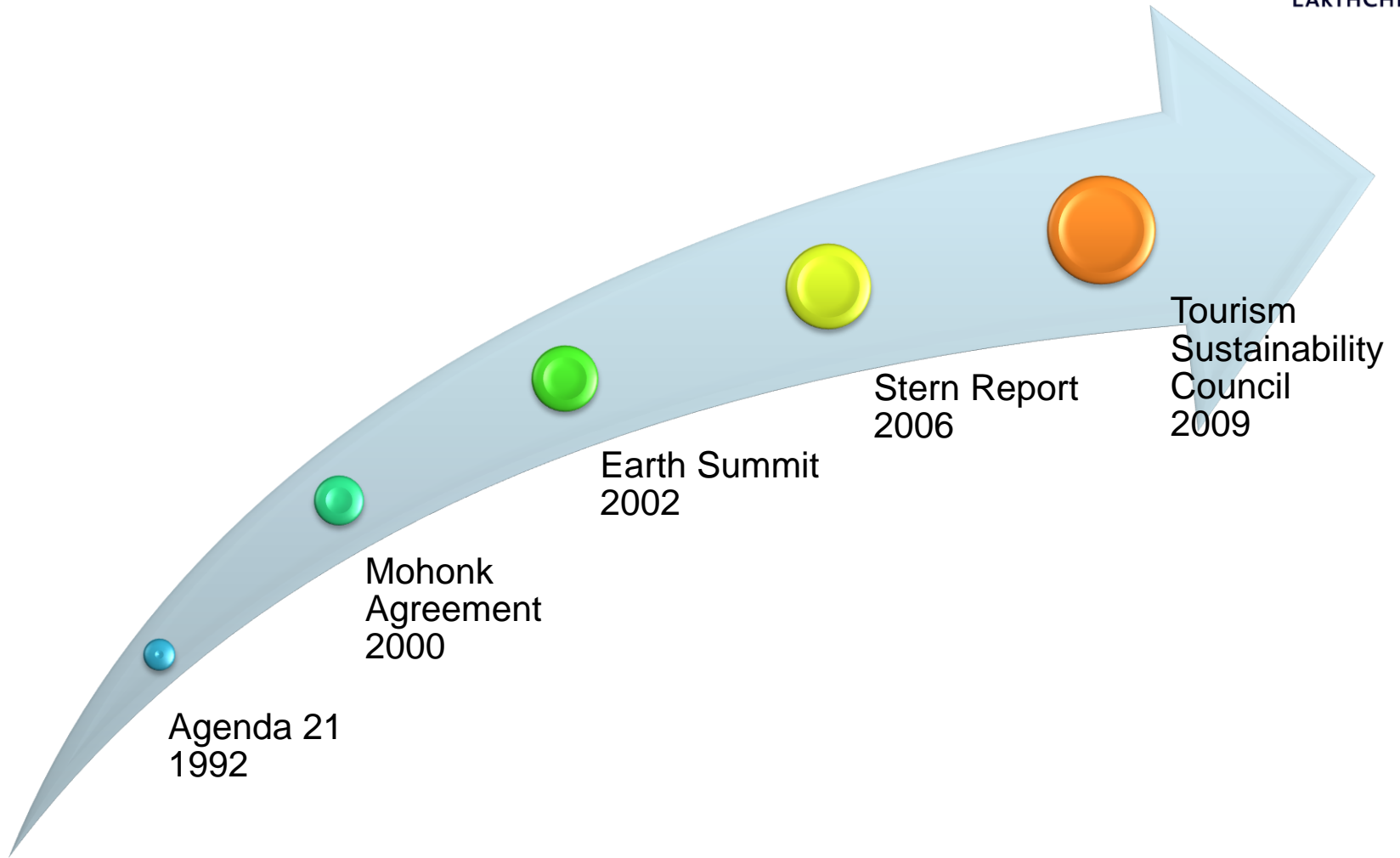
The world is scrutinising with increasing urgency the way industry monitors and reports on its sustainability performance.

Credible measurement and reporting processes are essential in order to be accountable and demonstrate year-on-year improvement.

THE JOURNEY



EARTHCHECK



WHY PARTICIPATE?



EARTHCHECK

- ✓ Demonstrates Corporate Social Responsibility
- ✓ Improved Environmental Outcomes
- ✓ Improved Community Interactions
- ✓ Staff Commitment & Increased Morale
- ✓ Better Business
- ✓ Green Market Appeal
- ✓ Savings Through Efficient Use Of Resources



EARTHCHECK

Key achievements to date include:

Energy Consumption is 69.1% better than Best Practice

Potable Water Consumption is 53.9% better than Best Practice

Water Savings Rating is 7.5 points better than Best Practice

Waste Recycling Rating is 24.9 points better than the Baseline Level

Replaced all 60W guest room corridor incandescent lighting with 11 watt energy saving bulbs

Implemented an ongoing Community Service program with the Home of Love in Sham Shui Po through the Foodlink Foundation

EATON HOTEL, HONG KONG





EARTHCHECK

Key achievements to date include:

In 2008-2009, Kaikoura reduced energy consumption to 98.8 GJ per person; **39% above best-practice.**

During the same period, the community reduced their waste to 0.18 tonnes per person; **47.9% above best-practice.**

Kaikoura consumed 252kL of potable water per person in 2008-2009, **27% better than the baseline.**

Since 2001, Kaikoura has reduced **waste sent to landfill by 75%**, extending the life of their landfill by ten years.

In 2009, through the *Warm Up Kaikoura* initiative, **300 homes were assessed for energy loss and fitted with appropriate insulation.**

Kaikoura introduced *Zero Organics* to landfill by **collecting organic household food waste for communal composting.**

KAIKOURA DISTRICT COUNCIL, NZ



SANDALS REGENCY LA TOC GOLF RESORT & SPA



The Resort's major achievements to date include:

A 20% reduction in water use

A 51% reduction in energy consumption

A score of 96.3 points for recycling rates
using the EarthCheck rating checklist

A 100% community commitment score
using the EarthCheck rating checklist





EARTHCHECK

Key achievements in 2008 include:

Energy Consumption was 64.3% better than the Best Practice and renewable sources produced 23% of energy used by the region.

Potable Water Consumption was only 103.6 kL per person; 17% better than the Best Practice level.

In 2008, the solid waste per person was only 0.2 tonnes; 9.1% better than Best Practice

The Water Saving rating was 3.9 points better than Best Practice level.

Travel and Tourism Accreditation was 73.5% better than the Best Practice level.

Habitat Conservation (biodiversity) was 52% better than the Best Practice level.

95% of the water used was recycled or captured from rainfall.

Modern water/ sewage treatment to ensure no waste enters the ocean.

HUATULCO





EARTHCHECK

KEY ACHIEVEMENTS TO DATE INCLUDE:

Since 2007, the hotel has reduced energy consumed per guest per night by 14%

During 2008-2009, the property sourced 30% of its energy from renewable sources

Since 2002, the hotel has reduced potable water consumption per guest per night by 48%

Since 2002, the hotel has reduced guest waste sent to landfill sites by 22.5%

The Langham replaced petrol limousines with fuel-efficient, hybrid Lexus limousines; reducing petrol costs by 40%

The Langham formed sustainability partnerships with suppliers.

THE LANGHAM, AUCKLAND, NZ



NOVOTEL SYDNEY ON DARLING HARBOUR



KEY ACHIEVEMENTS TO DATE INCLUDE:

40% reduction in water consumption

27% reduction in energy consumption

2.4L per guest night of waste sent to landfill,
a 33% reduction

Scoring 83 points out of 100 for community
contributions using the EarthCheck ratings
checklist